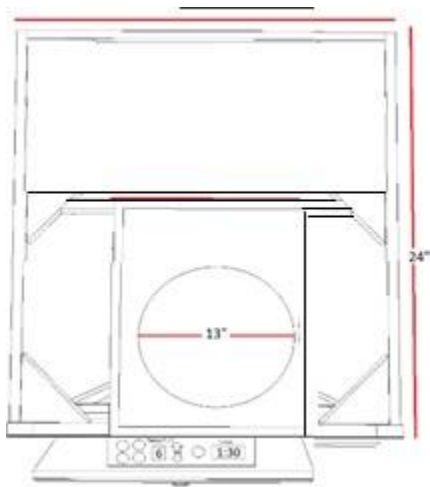


15" InvisaCOOK

400-1 Unit Series



InvisaCook LLC

4601 East Moody Blvd. Suite C-1

Bunnell, FL 32210

www.invisacook.com



INVISA COOK

What You Don't See Won't Burn You

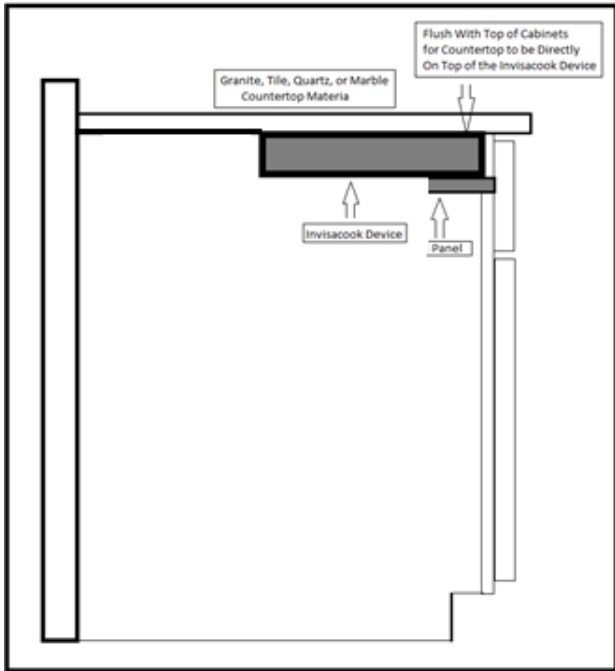
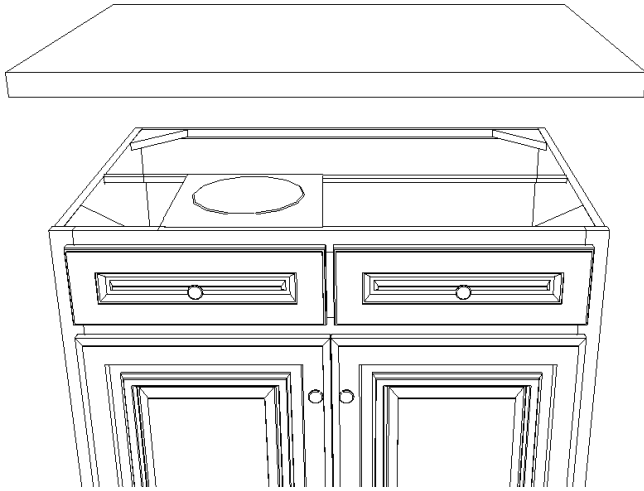
Technical Details

| 1 Unit Series | Element Performance |
|--------------------|---------------------------|
| Item Wight | 12.5 Pounds |
| Dimensions | 13.75 x 10.5 x 2 Inches |
| Power Requirements | 110 DC |
| AMP Capacity | 10A |
| Wattage | 1500-1800 W (total) |
| Work Temperature | 15-55 Degree Celsius |
| Voltage / VAC | 50/60 Hz, 110-120 |
| Unit Power | 2.0 |
| KW / HR | Approx. 4823 Each, BTU/HR |
| Max Power | 4.6 KW/HR |

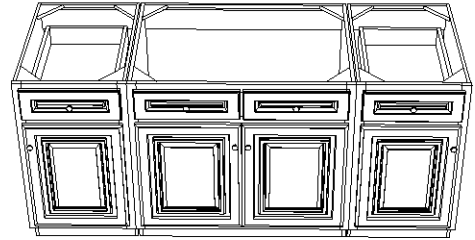
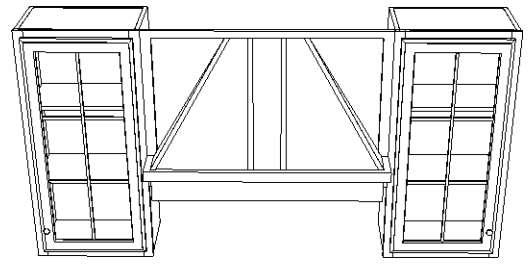
Features & Benefits

- Invisa-induction is faster than gas and Electric Cooktops. Precise cooking, Easy Cleaning and more Efficient
- Invisacook is unseen cooking process from underneath your countertops, so you'll have that flawless and seamless kitchen.
- Regulates temperatures continuously, during the cooking process and adjusts as needed to even cook temperatures
- Each element has an independent countdown timer, so nothing will ever be left on to burn
- Each element has its own shutdown switch when not being uses

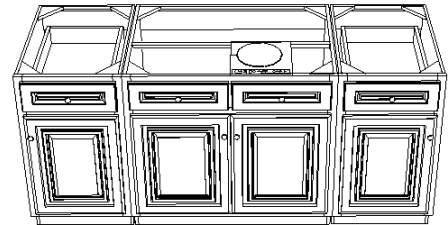
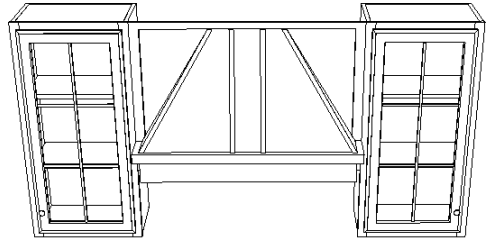




STEP 1



STEP 2



STEP 3

