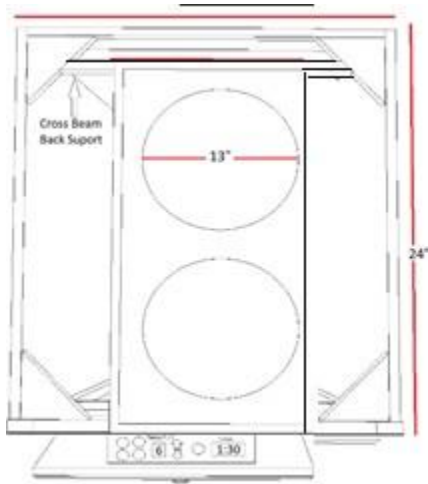


30" InvisaCOOK

400-2 Unit Series



INVISA COOK

What You Don't See Won't Burn You

Technical Details

2 Unit Series	Element Performance
Item Wight	15.5 Pounds
Dimensions	19 x 11 x 2 Inches
Power Requirements	110 DC
AMP Capacity	15 A
Wattage	1800 W (total)
Work Temperature	15-55 Degree Celsius
Voltage / VAC	50/60 Hz, 110-120
Unit Power	2.0
KW / HR	4823 Each, BTU/HR
Max Power	4.6 KW/HR



Features & Benefits

- Invisa-induction is faster than gas and Electric Cooktops. Precise cooking, Easy Cleaning and more Efficient
- Invisacook is unseen cooking process from underneath your countertops, so you'll have that flawless and seamless kitchen.
- Regulates temperatures continuously, during the cooking process and adjusts as needed to even cook temperatures
- Each element has an independent countdown timer, so nothing will ever be left on to burn
- Each element has its own shutdown switch when not being uses

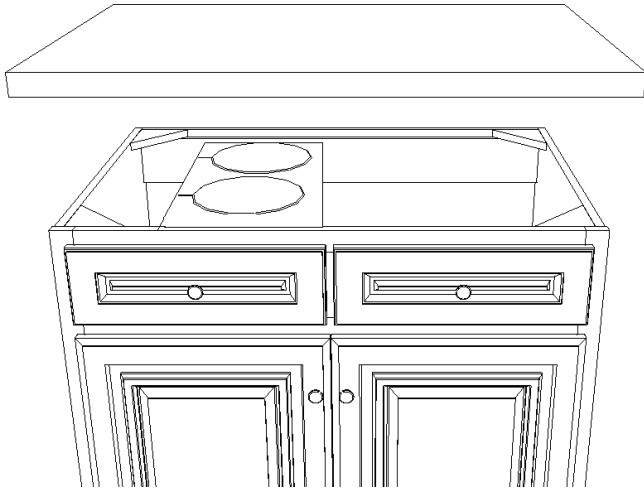
InvisaCook LLC

4601 East Moody Blvd. Suite H-2

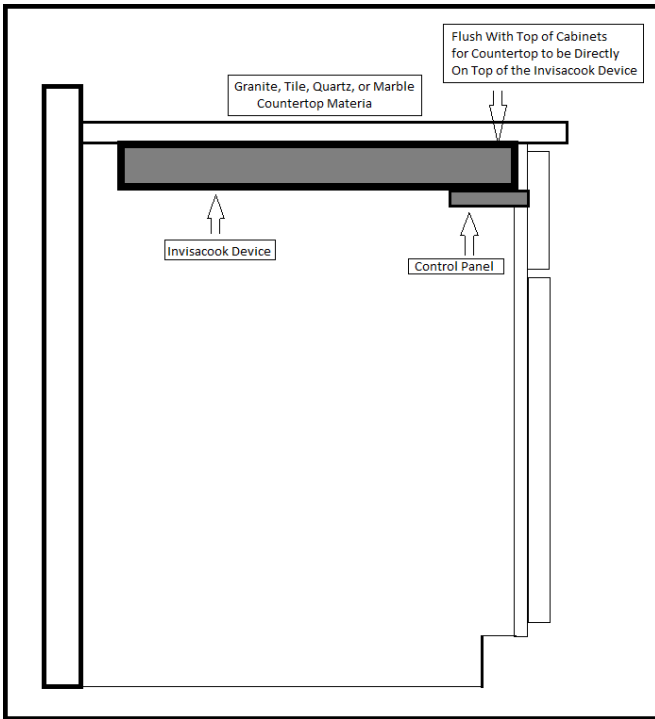
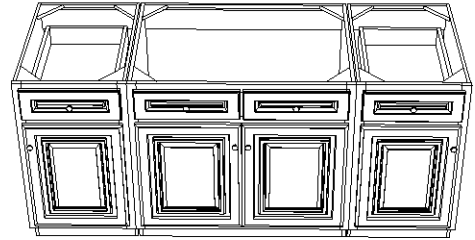
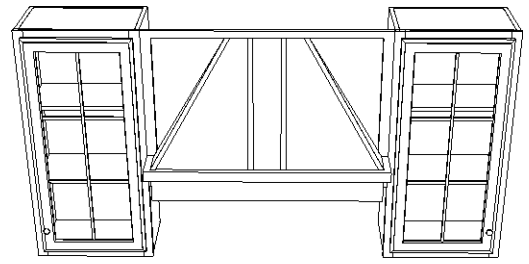
Bunnell, FL 32259

www.invisacook.com

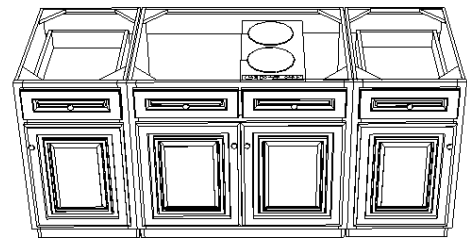
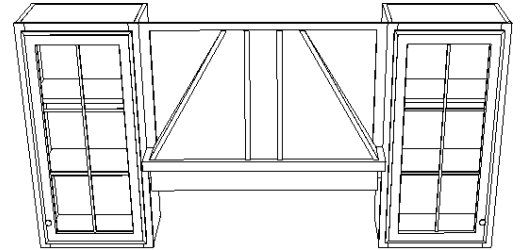




STEP 1



STEP 2



STEP 3

