

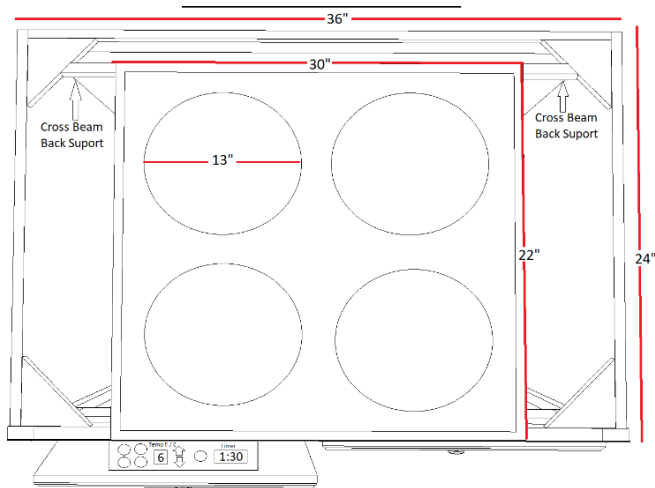
30" InvisaCOOK

400-4 Unit Series



INVISA COOK

What You Don't See Won't Burn You



Technical Details	
4 Unit Series	Element Performance
Item Wight	25.5 Pounds
Dimensions	19 x 22 x 2 Inches
Power Requirements	220-240 DC
AMP Capacity	25 A
Wattage	7200 W (total - Shared)
Work Temperature	15-55 Degree Celsius
Voltage / VAC	50/60 Hz, 220-240
Unit Power	2.0 + 2.0 + 2.0 + 2.0
KW / HR	6823 Each, BTU/HR
Max Power	6.8 KW/HR



Features & Benefits

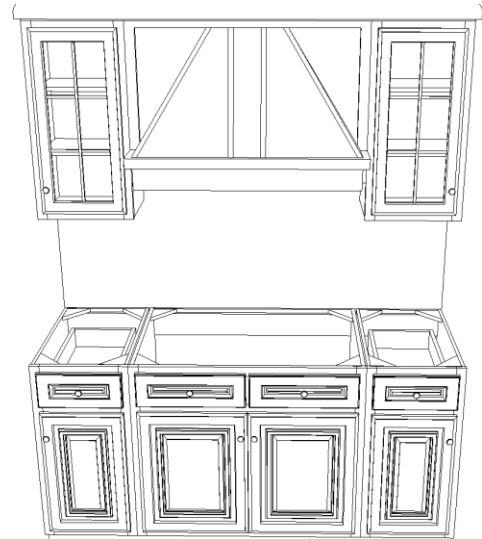
- Invisa-induction is faster than gas and Electric Cooktops. Precise cooking, Easy Cleaning and more Efficient
- Invisacook is unseen cooking process from underneath your countertops, so you'll have that flawless and seamless kitchen.
- Regulates temperatures continuously, during the cooking process and adjusts as needed to even cook temperatures
- Each element has an independent countdown timer, so nothing will ever be left on to burn
- Each element has its own shutdown switch when not being uses

InvisaCook LLC
 305 Summerset Dr
 Switzerland, FL 32259
www.invisacook.com

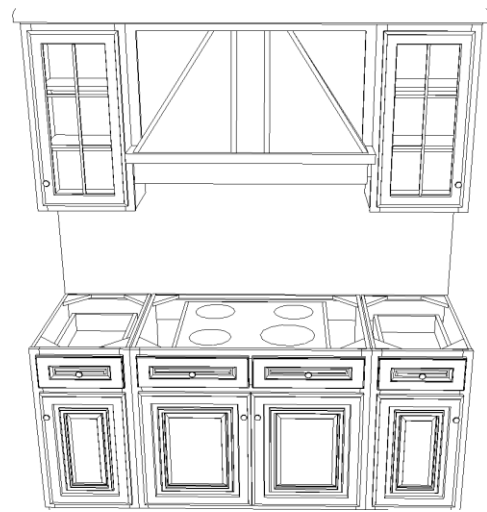




STEP 1



STEP 2



STEP 3

